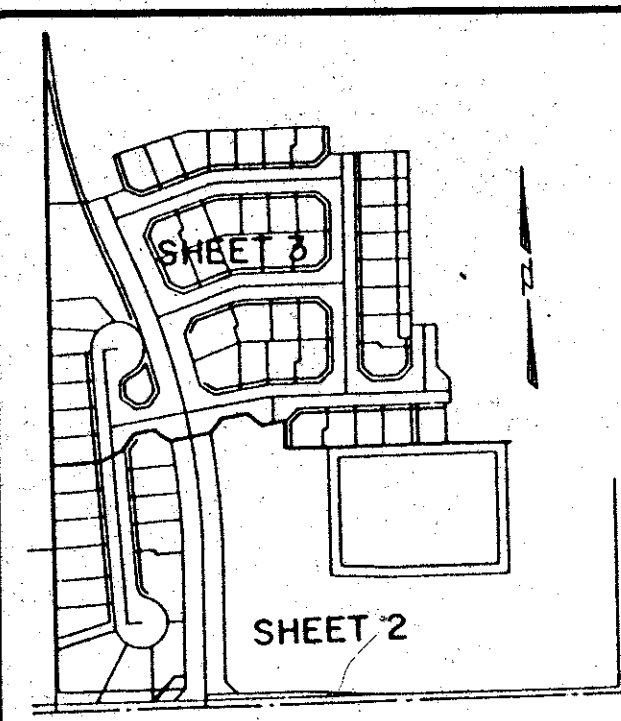
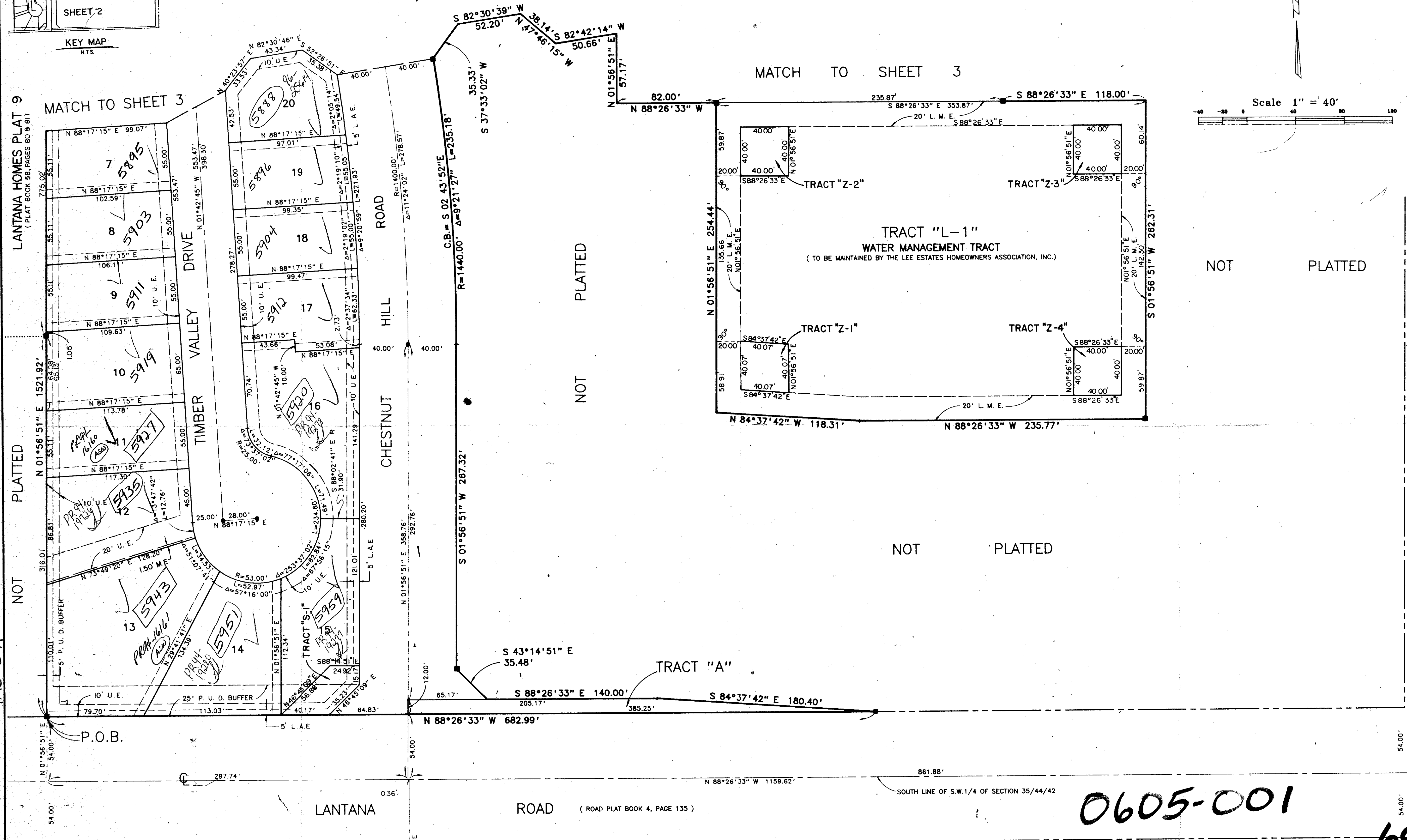
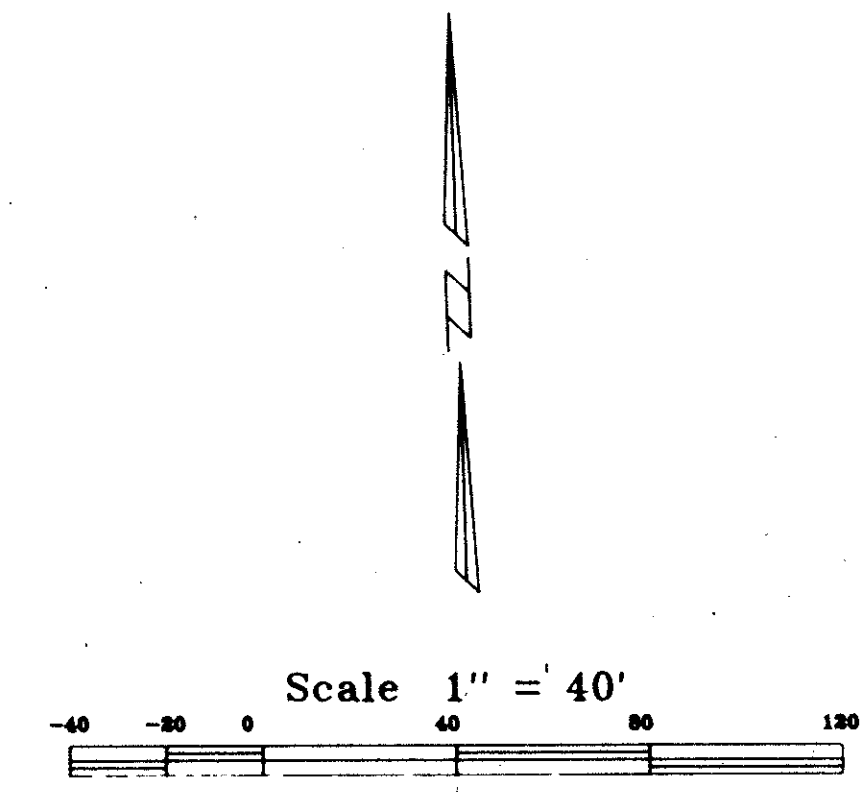


# LEE ESTATES PLAT 1

A PLANNED UNIT DEVELOPMENT  
LYING IN SECTION 35, TOWNSHIP 44 SOUTH, RANGE 42 EAST,  
PALM BEACH COUNTY, FLORIDA  
SHEET 2 OF 3 JULY, 1992



STATE OF FLORIDA  
COUNTY OF PALM BEACH  
This Plat was filed for record at \_\_\_\_\_  
M. this \_\_\_\_\_ day of \_\_\_\_\_, 19\_\_\_\_  
and duly recorded in Plat Book No. \_\_\_\_\_  
on Page \_\_\_\_\_  
Milton T. Bauer, Clerk of the Circuit Court  
By \_\_\_\_\_ D.C.



TAZ = 349

**IMPACT FEE**  
PET. 90-16  
COLLECT

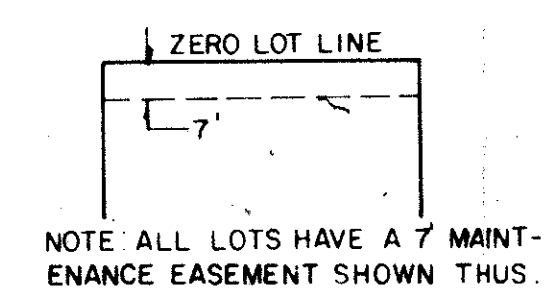
0605-001

69/110

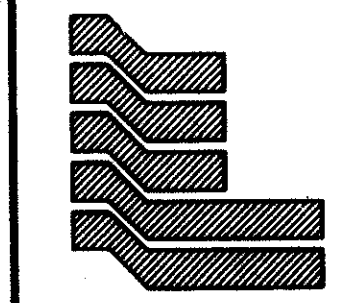
SUBDIVISION \* LEE ESTATES PLAT 1  
BOOK 69  
PAGE 110  
FLOOD MAP # 175B  
ZONING RS/PUD  
ROAD # 33  
SE 90-16  
ZIP CODE 33463  
PUD NAME same  
AS PLAT

STRAWBERRY LAKES PLAT ONE  
(PLAT BOOK 56, PAGES 141 & 142)

STRAWBERRY LAKES PLAT 4  
(PLAT BOOK 54, PAGE 131)



NOTE: ALL LOTS HAVE A 7' MAINTENANCE EASEMENT SHOWN THUS.



Landmark Surveying & Mapping Inc.  
1850 FOREST HILL BOULEVARD  
PH. (407) 433-5405 SUITE 100 W.P.B. FLORIDA

LEE ESTATES PLAT 1